

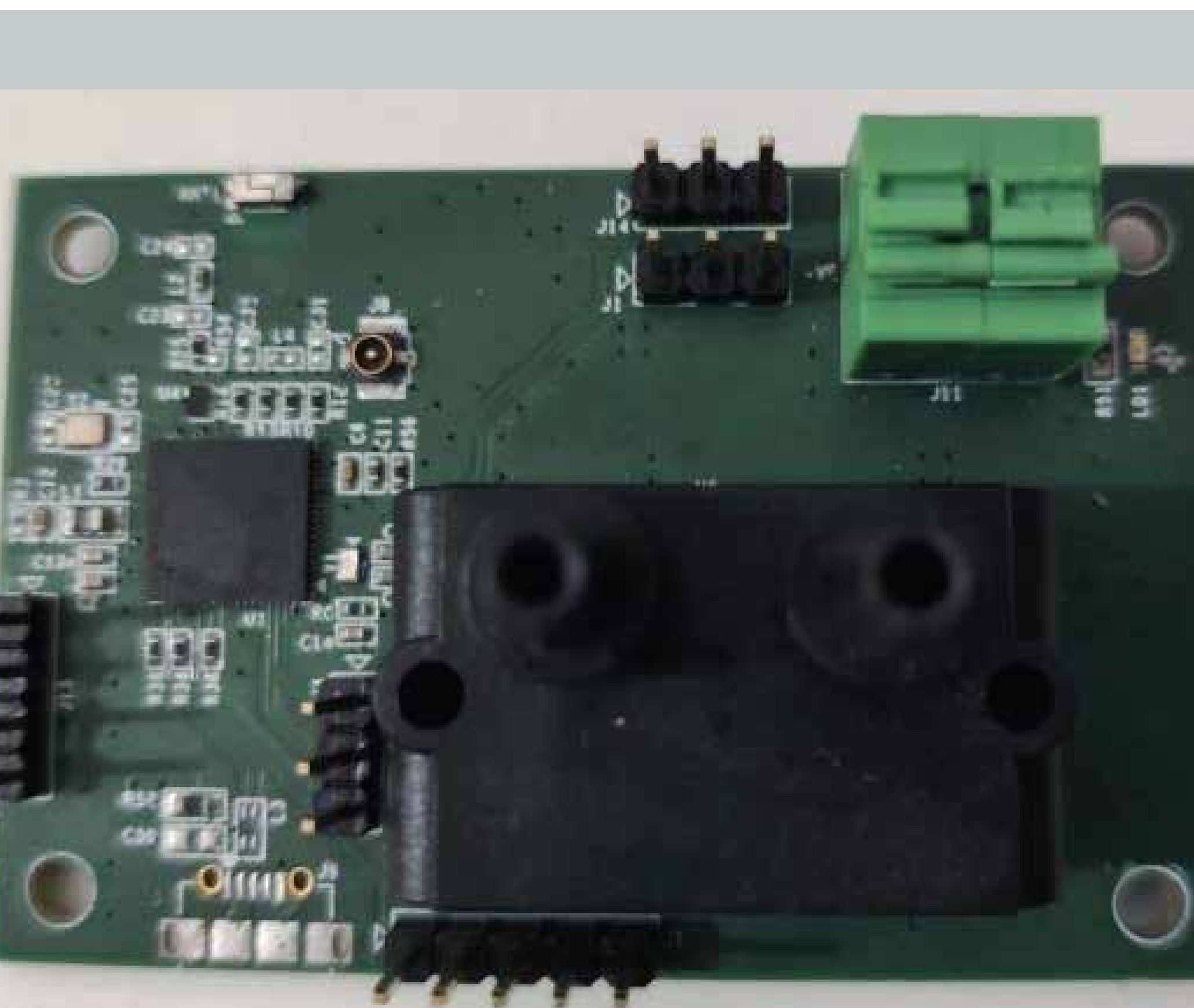
# Differential Pressure Sensor Module

Differential Pressure Monitoring Module is a Smart IoT device based on Bluetooth Low Energy 5.0. Module is Designed to measure the Differential pressure between 2 different environment/system/chamber to Monitor and analyze the System Health. Module has on board Differential Pressure sensor with Digital Output and Differential Pressure Data can be sent over Bluetooth to Gateway for the Remote Monitor Application. Module supports Mesh Application to Connect to Multiple Sensor Nodes.

IoT hardware,  
software and  
smart product  
development

## Key Features:

- Arm®-based Cortex®-M4 Wireless MCU with BLE 5.0 Support.
- On Board Differential Pressure Sensor with Digital Output.
- Differential Male - 0.2" (5.2mm) Tube connection port on sensor.
- The module is Temperature Compensated.
- On Board SPI Flash for Differential Pressure Data Storage.
- Chip Antenna for Effective Communication Range.



## Mechanical specifications:

- Module Dimensions: 90mm x70mmx50mm (LWH)
- Mounting provision: Wall mount and DIN rail
- Provision for 2 Air tube with ID 4mm
- Sealed Enclosure: IP-65
- Weight: ~200 gram
- FR rated material

## Specifications:

- Power Supply Operating Range: 4.7V~6V
- Bluetooth Specification: Bluetooth® 5.0 with Configurable Output Power
- On Board Chip Antenna for Long Range.
- Wide operating temperature range -40 °C to +85 °C

## Measurement data:

- Differential pressure -0.07PSI ~ 0.07PSI (-500Pa ~ +500Pa)
- Differential Pressure can be measured in both positive and negative side up to 500Pa

[www.kemsys.com](http://www.kemsys.com)

## Contact Us

Offices : Bangalore | Ahmedabad | Dallas  
Email : [communication@kemsys.com](mailto:communication@kemsys.com)  
Phone : IND : + 91 86003 38049  
USA : + 1 (210) 446 9171